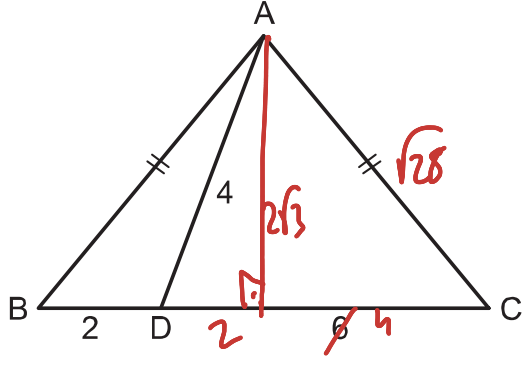


TEST - 1

ikizkenar üçgen

1.

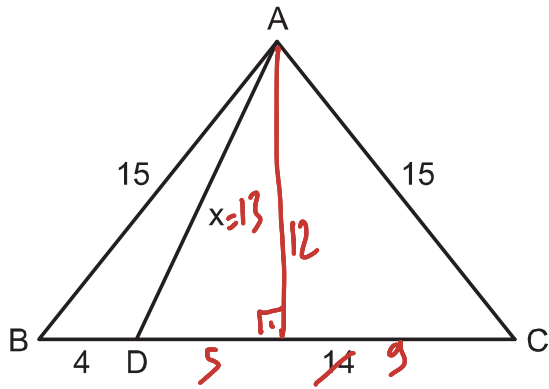


ABC üçgeninde
 $|AB| = |AC|$
 $|DC| = 6$ cm
 $|BD| = 2$ cm
 $|AD| = 4$ cm

Yukarıda verilene göre, $|AC|$ kaç cm dir?

- A) 5 B) $2\sqrt{7}$ C) $4\sqrt{2}$ D) 6 E) $3\sqrt{5}$

2.

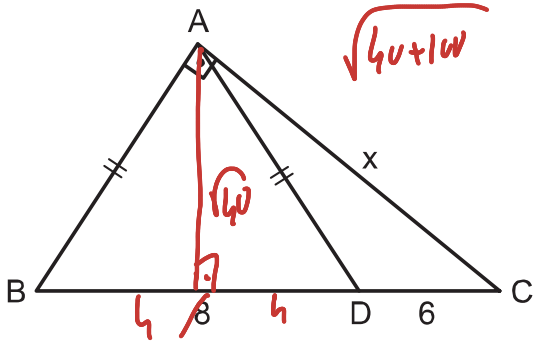


ABC üçgeninde
 $|AB| = |AC| = 15$ cm
 $|DC| = 14$ cm
 $|BD| = 4$ cm

Yukarıda verilene göre, $|AD| = x$ kaç cm dir?

- A) 10 B) 11 C) 12 D) 13 E) 14

3.

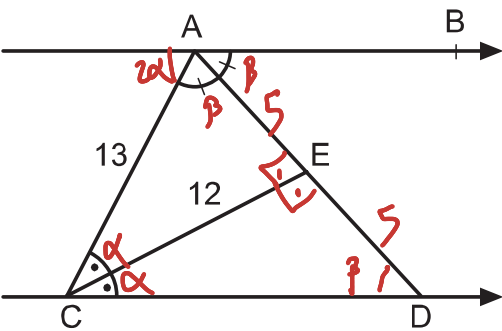


ABC dik üçgen
 $AB \perp AC$
 $|AB| = |AD|$
 $|BD| = 8$ cm
 $|CD| = 6$ cm

Yukarıda verilene göre, $|AC| = x$ kaç cm dir?

- A) $6\sqrt{3}$ B) $2\sqrt{35}$ C) 12 D) $4\sqrt{10}$ E) $6\sqrt{5}$

4.

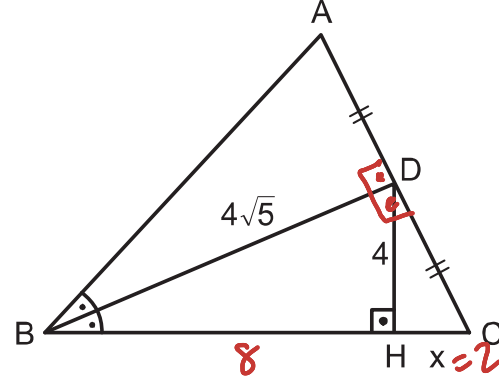


$AB \parallel CD$
 AD ve CE açıortay
 $|AC| = 13$ br
 $|EC| = 12$ br

Yukarıda verilene göre, $|AD|$ kaç br dir?

- A) 8 B) 10 C) 12 D) 14 E) 16

5.

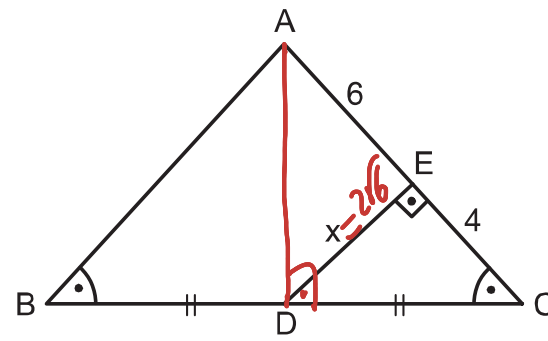


ABC üçgeninde
 BD açıortay
 $DH \perp BC$
 $|AD| = |CD|$
 $|BD| = 4\sqrt{5}$ cm
 $|DH| = 4$ cm

Yukarıda verilene göre, $|CH| = x$ kaç cm dir?

- A) 1 B) $\sqrt{2}$ C) $\sqrt{3}$ D) 2 E) 3

6.



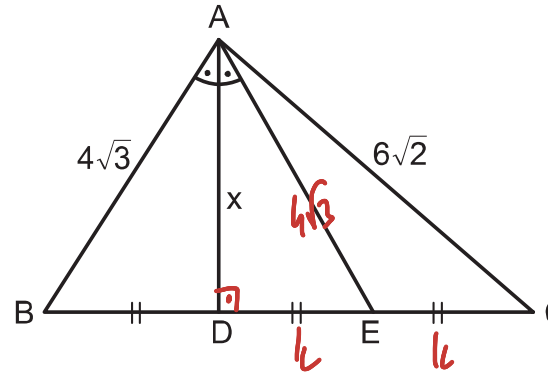
ABC üçgeninde
 $m(\widehat{A}) = m(\widehat{C})$
 $DE \perp AC$
 $|BD| = |CD|$
 $|AE| = 6$ cm
 $|CE| = 4$ cm

Yukarıda verilene göre, $|DE| = x$ kaç cm dir?

- A) $3\sqrt{2}$ B) $2\sqrt{6}$ C) 5 D) $4\sqrt{2}$ E) 6

karekök

7.

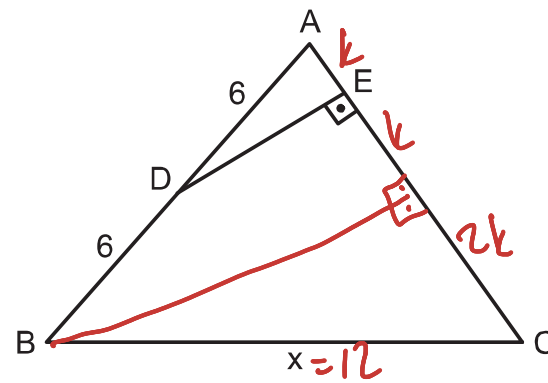


ABC üçgeninde
 $m(\widehat{BAD}) = m(\widehat{DAE})$
 $|BD| = |DE| = |EC|$
 $|AB| = 4\sqrt{3}$ cm
 $|AC| = 6\sqrt{2}$ cm

Yukarıda verilene göre, $|AD| = x$ kaç cm dir?

- A) $2\sqrt{6}$ B) $2\sqrt{7}$ C) $4\sqrt{2}$ D) 6 E) $2\sqrt{10}$

8.

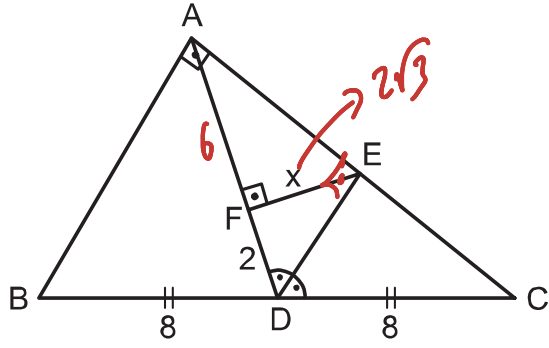


ABC üçgeninde
 $DE \perp AC$
 $|AD| = |BD| = 6$ cm
 $|EC| = 3 \cdot |AE|$

Yukarıda verilene göre, $|BC| = x$ kaç cm dir?

- A) 12 B) 14 C) 15 D) 16 E) 18

9.

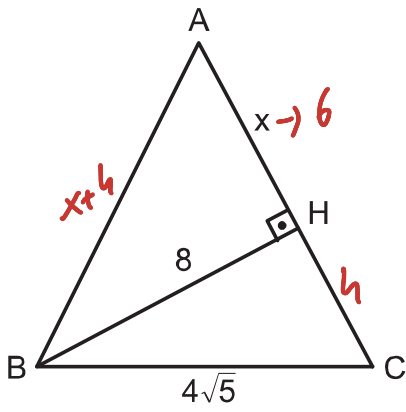


ABC dik üçgeninde
 $m(\widehat{ADE}) = m(\widehat{EDC})$
 $EF \perp AD$
 $|BD| = |CD| = 8 \text{ cm}$
 $|FD| = 2 \text{ cm}$

Yukarıda verilenlere göre, $|EF| = x$ kaç cm dir?

- A) $\sqrt{6}$ B) $2\sqrt{2}$ C) $2\sqrt{3}$ D) 4 E) $3\sqrt{2}$

10.

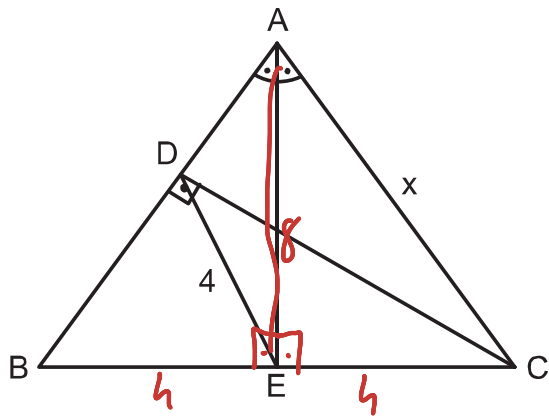


$|AB| = |AC|$
 $BH \perp AC$
 $|BH| = 8 \text{ cm}$
 $|BC| = 4\sqrt{5} \text{ cm}$

Yukarıda verilenlere göre, $|AH| = x$ kaç cm dir?

- A) 4 B) 5 C) 6 D) 7 E) 8

11.

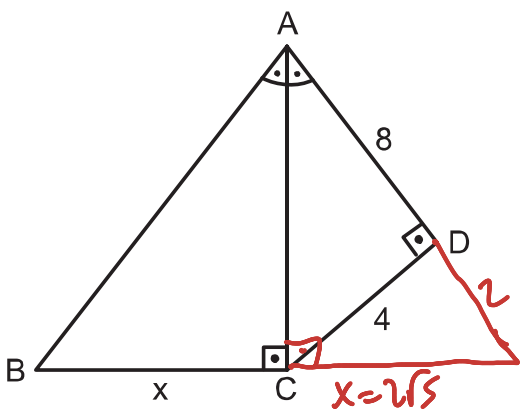


ABC üçgeninde
 $|AB| = |AC|$
 $m(\widehat{BAE}) = m(\widehat{EAC})$
 $CD \perp AB$
 $|AE| = 8 \text{ cm}$
 $|DE| = 4 \text{ cm}$

Yukarıda verilenlere göre, $|AC| = x$ kaç cm dir?

- A) $6\sqrt{2}$ B) $4\sqrt{5}$ C) $4\sqrt{6}$ D) 10 E) 12

12.

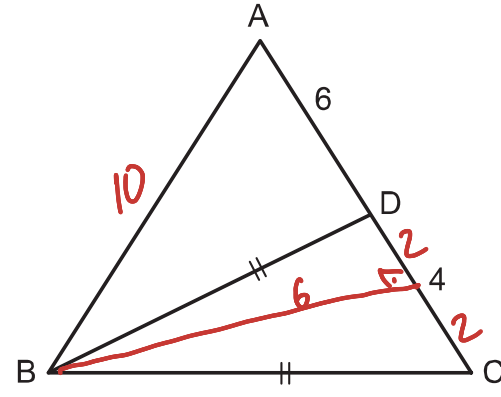


ABCD dörtgeninde
 $m(\widehat{BAC}) = m(\widehat{CAD})$
 $AC \perp BC$
 $CD \perp AD$
 $|AD| = 8 \text{ cm}$
 $|CD| = 4 \text{ cm}$

Yukarıda verilenlere göre, $|BC| = x$ kaç cm dir?

- A) $2\sqrt{3}$ B) 4 C) $2\sqrt{5}$ D) 5 E) $4\sqrt{2}$

13.

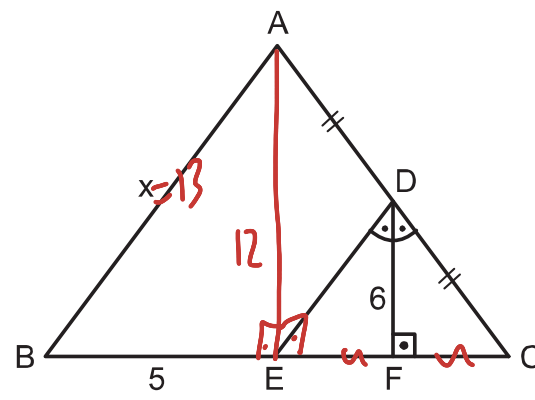


ABC üçgeninde
 $|AB| = |AC|$
 $|BD| = |BC|$
 $|AD| = 6 \text{ cm}$
 $|CD| = 4 \text{ cm}$

Yukarıda verilenlere göre, $|BC|$ kaç cm dir?

- A) $2\sqrt{10}$ B) $3\sqrt{5}$ C) $4\sqrt{3}$ D) 7 E) $5\sqrt{2}$

14.

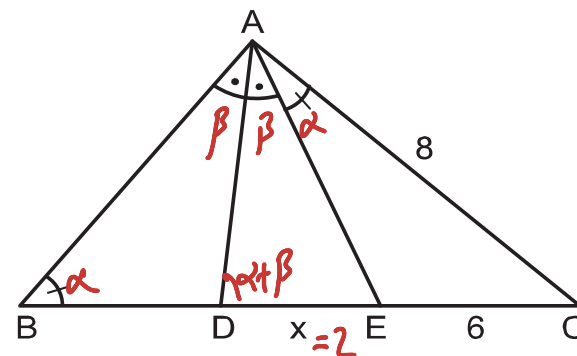


ABC üçgeninde
 $m(\widehat{EDF}) = m(\widehat{FDC})$
 $DF \perp BC$
 $|AD| = |CD|$
 $|DF| = 6 \text{ cm}$
 $|BE| = 5 \text{ cm}$

Yukarıda verilenlere göre, $|AB| = x$ kaç cm dir?

- A) 13 B) 15 C) 16 D) 18 E) 20

15.

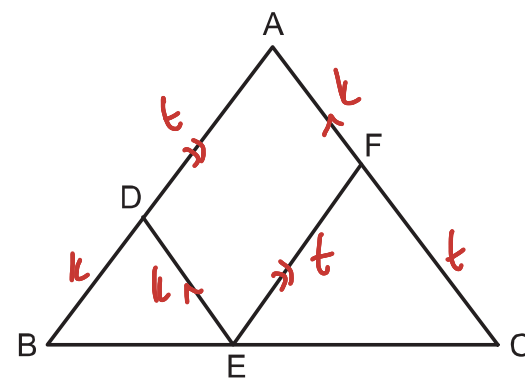


ABC üçgeninde
 $m(\widehat{ABC}) = m(\widehat{EAC})$
 $m(\widehat{BAD}) = m(\widehat{DAE})$
 $|AC| = 8 \text{ cm}$
 $|EC| = 6 \text{ cm}$

Yukarıda verilenlere göre, $|DE| = x$ kaç cm dir?

- A) 1 B) 2 C) 3 D) 4 E) 5

16.



ABC üçgeninde
 $DE \parallel AC$
 $EF \parallel AB$
 $|AB| = |AC|$
 $\text{Ç}(ADEF) = 18 \text{ cm}$

Yukarıda verilenlere göre, $|AB|$ kaç cm dir?

- A) 9 B) 10 C) 12 D) 16 E) 18