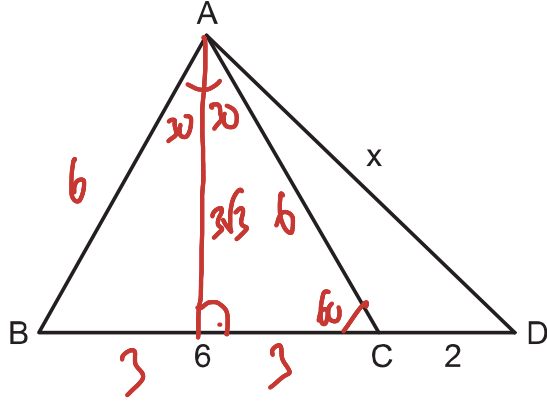


TEST - 1

eşkenar üçgen

1.

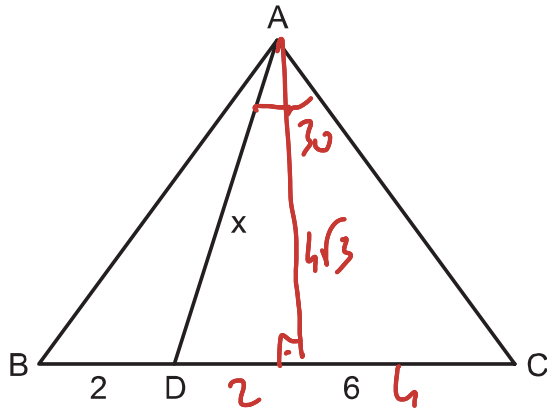


ABC eşkenar üçgen
B, C, D doğrusal
 $|BC| = 6$ cm
 $|CD| = 2$ cm
 $\sqrt{27+25} = 2\sqrt{13}$

Yukarıda verilenlere göre, $|AD| = x$ kaç cm dir?

- A) $3\sqrt{5}$ B) $4\sqrt{3}$ C) 7 D) $5\sqrt{2}$ E) $2\sqrt{13}$

2.

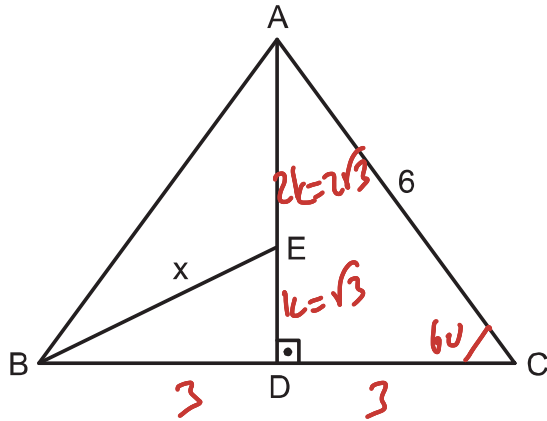


ABC eşkenar üçgen
 $|CD| = 6$ cm
 $|BD| = 2$ cm

Yukarıda verilenlere göre, $|AD| = x$ kaç cm dir?

- A) $2\sqrt{13}$ B) $3\sqrt{6}$ C) $2\sqrt{14}$ D) $2\sqrt{15}$ E) 8

3.

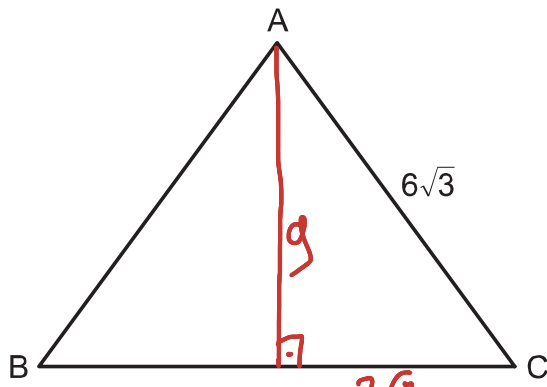


ABC eşkenar üçgen
 $AD \perp BC$
 $|AE| = 2 \cdot |ED|$
 $|AC| = 6$ birim

Yukarıda verilenlere göre, $|BE| = x$ kaç birimdir?

- A) $2\sqrt{3}$ B) $\sqrt{15}$ C) 4 D) $3\sqrt{2}$ E) $2\sqrt{5}$

4.

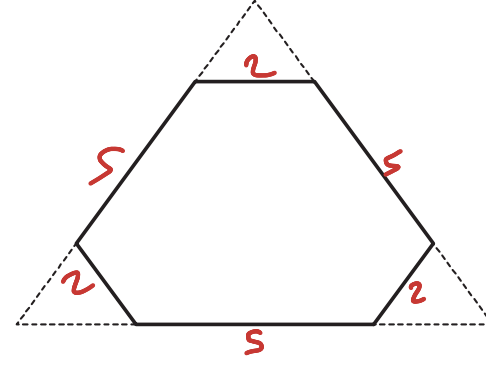


ABC eşkenar üçgen
 $|AC| = 6\sqrt{3}$ cm

ABC üçgeni içinde, B ve C noktalarına eşit uzaklıkta bulunan noktaların geometrik yerinin uzunluğu kaç cm dir?

- A) $6\sqrt{2}$ B) 9 C) $3\sqrt{10}$ D) $6\sqrt{3}$ E) 12

5.

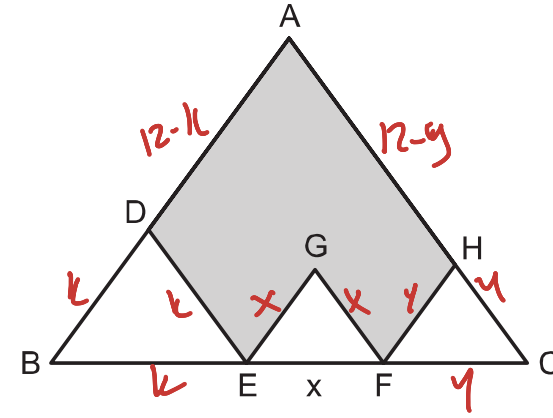


Çevresi 27 cm olan eşkenar üçgen şeklindeki bir kartonun köşelerinden bir kenarı 2 cm olan eşkenar üçgenler kesiliyor.

Buna göre, kalan kartonun çevresi kaç cm dir?

- A) 16 B) 19 C) 21 D) 24 E) 27

6.



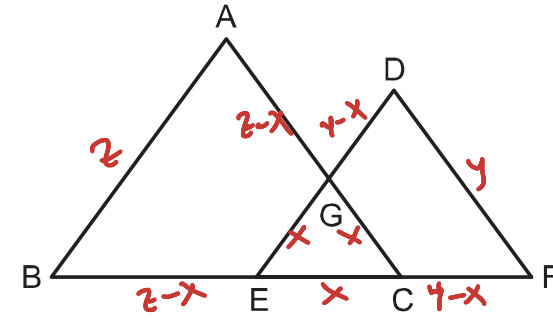
ABC, BDE, EGF ve FCH eşkenar üçgen
 $\Ç(ABC) = 36$ cm

Taralı şeklin çevresi 28 cm olduğuna göre, $|EF| = x$ kaç cm dir?

- A) 1 B) 2 C) 3 D) 4 E) 5

karekök

7.

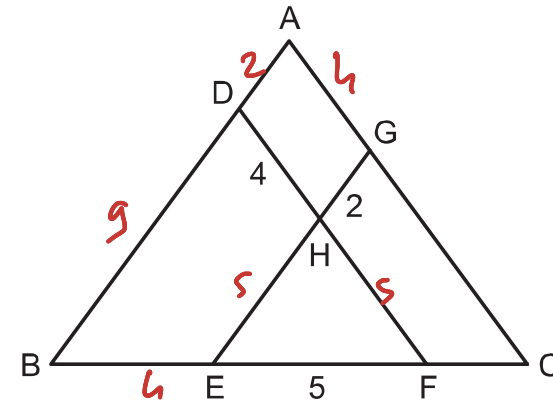


ABC ve DEF eşkenar üçgen
 $|BF| = 18$ cm
 $2 + y = 21$
 $y + 2 - x = 18$
 $x = 3 \Rightarrow 3x = 9$

$\Çevre(ABC) + \Çevre(DEF) = 63$ cm olduğuna göre, $\Çevre(ECG)$ kaç cm dir?

- A) 6 B) 9 C) 12 D) 15 E) 18

8.

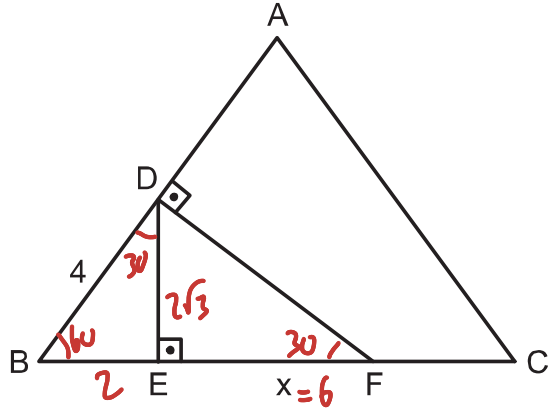


ABC eşkenar üçgen
 $EG \parallel AB$
 $DF \parallel AC$
 $|DH| = 4$ cm
 $|HG| = 2$ cm
 $|EF| = 5$ cm

Yukarıda verilenlere göre, $\Çevre(ABC)$ kaç cm dir?

- A) 24 B) 27 C) 30 D) 33 E) 36

9.

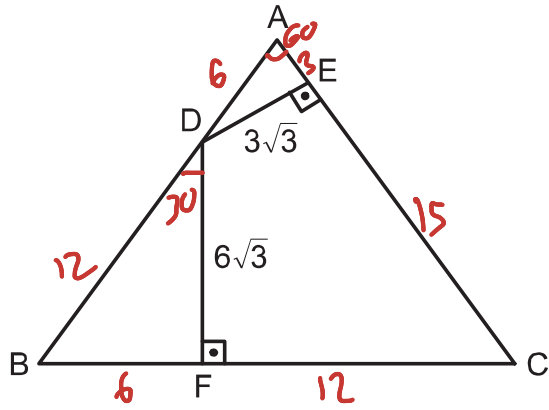


ABC eşkenar üçgen
 $DF \perp AB$
 $DE \perp BC$
 $|BD| = 4$ birim

Yukarıda verilenlere göre, $|EF| = x$ kaç birimdir?

- A) $2\sqrt{3}$ B) 4 C) $2\sqrt{6}$ D) $4\sqrt{2}$ E) 6

10.

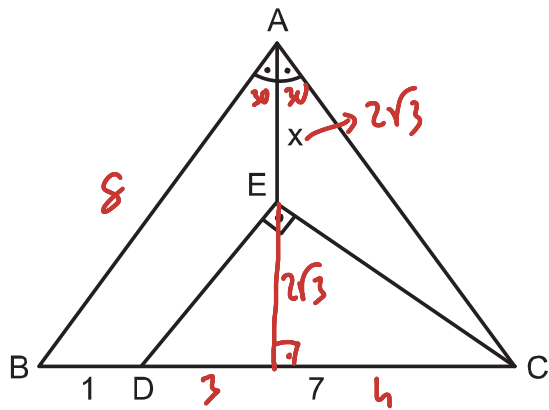


ABC eşkenar üçgen
 $DE \perp AC$
 $DF \perp BC$
 $|DF| = 6\sqrt{3}$ br
 $|DE| = 3\sqrt{3}$ br

Yukarıda verilenlere göre, $|EC| - |FC|$ kaç br dir?

- A) 1 B) $\sqrt{3}$ C) 2 D) 3 E) $2\sqrt{3}$

11.

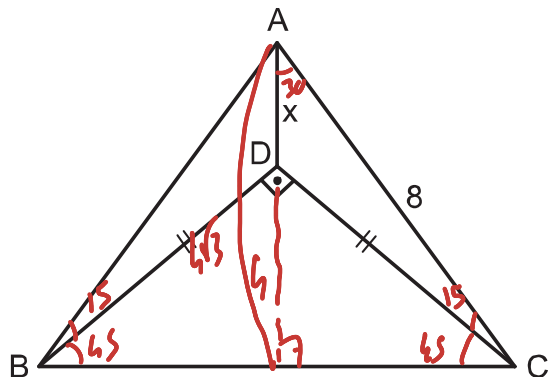


ABC eşkenar üçgen
 $m(\widehat{BAE}) = m(\widehat{CAE})$
 $ED \perp EC$
 $|CD| = 7$ cm
 $|BD| = 1$ cm

Yukarıda verilenlere göre, $|AE| = x$ kaç cm dir?

- A) $\sqrt{3}$ B) 2 C) 3 D) $2\sqrt{3}$ E) $3\sqrt{3}$

12.

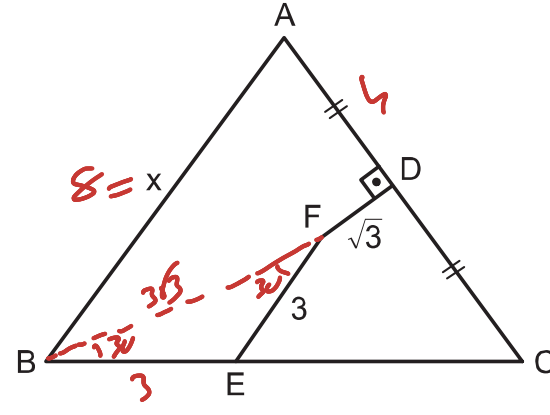


ABC eşkenar üçgen
 $BD \perp CD$
 $|BD| = |CD|$
 $|AC| = 8$ cm

Yukarıda verilenlere göre, $|AD| = x$ kaç cm dir?

- A) $4\sqrt{3} - 4$ B) $4\sqrt{3} - 4\sqrt{2}$ C) $4\sqrt{2} - 2$
 D) $2\sqrt{6} - 2$ E) $2\sqrt{6} - 1$

13.

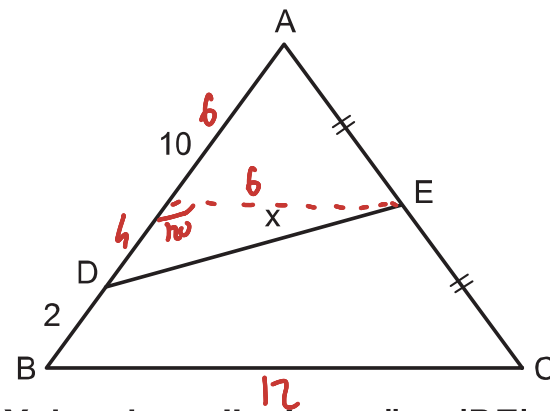


ABC eşkenar üçgen
 $FD \perp AC$
 $EF \parallel AB$
 $|AD| = |CD|$
 $|FD| = \sqrt{3}$ cm
 $|EF| = 3$ cm

Yukarıda verilenlere göre, $|AB| = x$ kaç cm dir?

- A) 8 B) 9 C) 10 D) 11 E) 12

14.



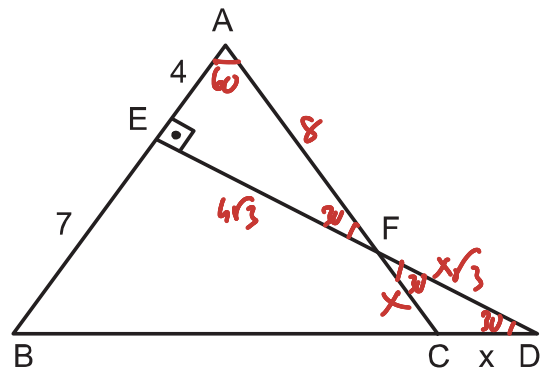
ABC eşkenar üçgen
 $|AE| = |CE|$
 $|AD| = 10$ cm
 $|BD| = 2$ cm

Yukarıda verilenlere göre, $|DE| = x$ kaç cm dir?

- A) $4\sqrt{3}$ B) $2\sqrt{13}$ C) $3\sqrt{6}$ D) 8 E) $2\sqrt{19}$

karekök

15.

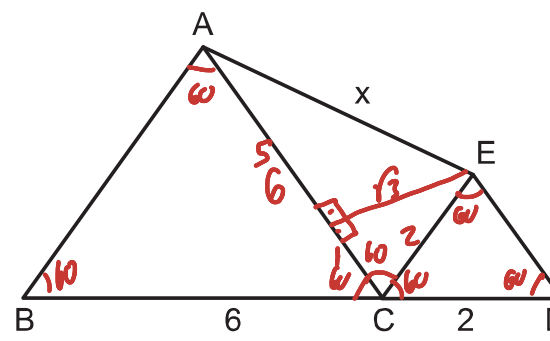


ABC eşkenar üçgen
 B, C, D doğrusal
 $AB \perp DE$
 $|AE| = 4$ cm
 $|BE| = 7$ cm

Yukarıda verilenlere göre, $|CD| = x$ kaç cm dir?

- A) 1 B) 2 C) 3 D) 4 E) 5

16.



ABC ve CDE eşkenar üçgen
 B, C, D doğrusal
 $|BC| = 6$ cm
 $|CD| = 2$ cm

Yukarıda verilenlere göre, $|AE| = x$ kaç cm dir?

- A) 5 B) $2\sqrt{7}$ C) $4\sqrt{2}$ D) 6 E) $2\sqrt{10}$