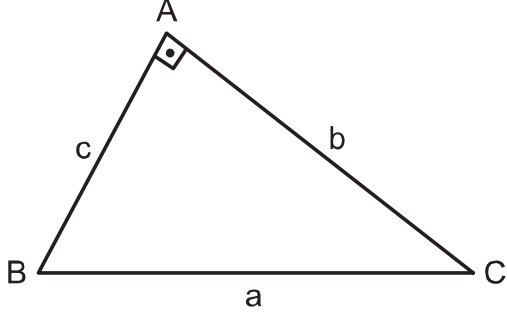


TEST - 1

dik üçgen

1.



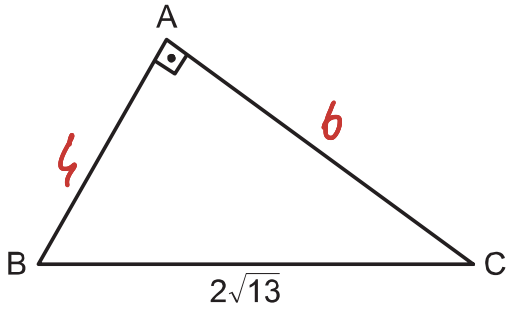
ABC dik üçgeninin kenar uzunlukları a, b ve c dir.

$$2a^2 = 48 \\ a^2 = 24 \Rightarrow a = 2\sqrt{6}$$

$a^2 + b^2 + c^2 = 48$ olduğuna göre, a kaçtır?

- A) $3\sqrt{2}$ B) $2\sqrt{5}$ C) $2\sqrt{6}$ D) 5 E) $4\sqrt{3}$

2.

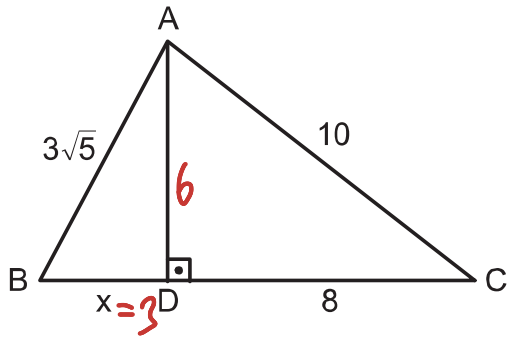


ABC dik üçgen
|BC| = $2\sqrt{13}$ cm
|AC| - |AB| = 2 cm

Yukarıda verilenlere göre, |AB| kaç cm dir?

- A) 3 B) 4 C) 5 D) 6 E) 7

3.

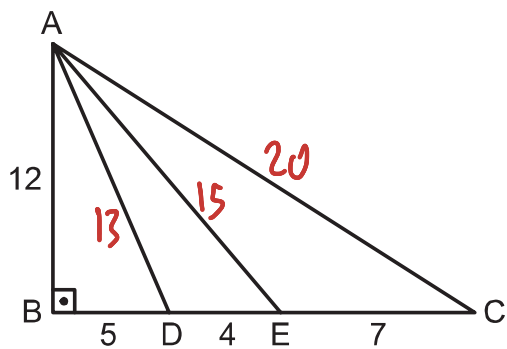


ABC üçgeninde
 $AD \perp BC$
|AC| = 10 cm
|DC| = 8 cm
|AB| = $3\sqrt{5}$

Yukarıda verilenlere göre, |BD| = x kaç cm dir?

- A) 2 B) $\sqrt{5}$ C) $2\sqrt{2}$ D) 3 E) $\sqrt{10}$

4.

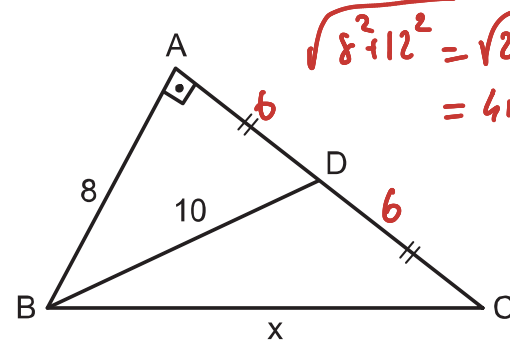


ABC dik üçgeninde
|AB| = 12 cm
|BD| = 5 cm
|DE| = 4 cm
|EC| = 7 cm

Yukarıda verilenlere göre, |AD| + |AE| + |AC| kaç cm dir?

- A) 40 B) 42 C) 44 D) 48 E) 52

5.



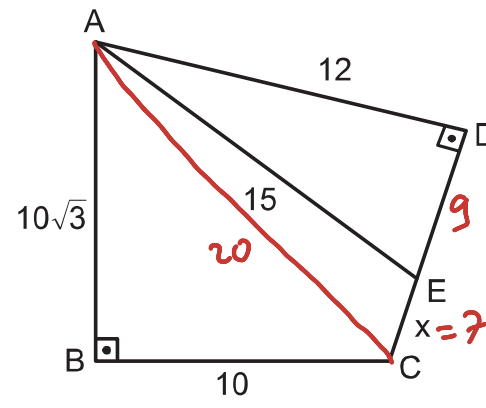
$$\sqrt{8^2 + 12^2} = \sqrt{208} \\ = 4\sqrt{13}$$

ABC dik üçgeninde
 $AB \perp AC$
|AD| = |DC|
|BD| = 10 cm
|AB| = 8 cm

Yukarıda verilenlere göre, |BC| = x kaç cm dir?

- A) $3\sqrt{13}$ B) $6\sqrt{5}$ C) 14 D) $10\sqrt{2}$ E) $4\sqrt{13}$

6.



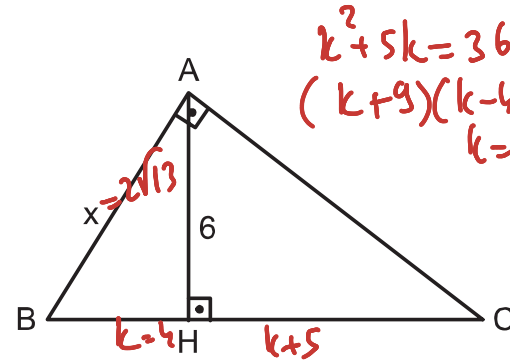
$AB \perp BC$
 $AD \perp CD$
|AB| = $10\sqrt{3}$ cm
|BC| = 10 cm
|AE| = 15 cm
|AD| = 12 cm

Yukarıda verilenlere göre, |EC| = x kaç cm dir?

- A) 7 B) 6 C) 5 D) 4 E) 3

karekök

7.



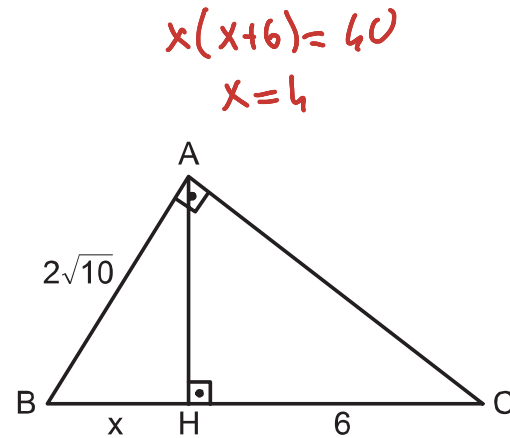
$$k^2 + 5k = 36 \\ (k+9)(k-4) = 0 \\ k = 4$$

ABC dik üçgen
 $AH \perp BC$
|AH| = 6 cm
|HC| - |BH| = 5 cm

Yukarıda verilenlere göre, |AB| = x kaç cm dir?

- A) $2\sqrt{13}$ B) $5\sqrt{2}$ C) $4\sqrt{3}$ D) $3\sqrt{5}$ E) $2\sqrt{10}$

8.



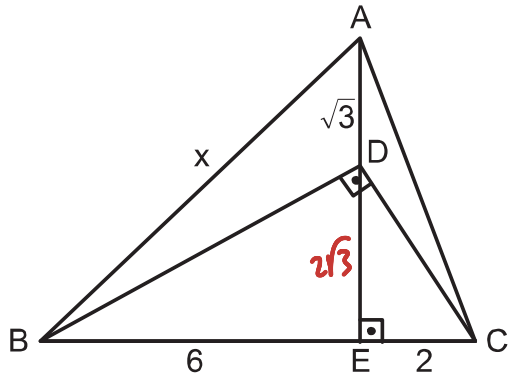
$$x(x+6) = 40 \\ x = 4$$

ABC dik üçgen
 $AH \perp BC$
|AB| = $2\sqrt{10}$ cm
|HC| = 6 cm

Yukarıda verilenlere göre, |BH| = x kaç cm dir?

- A) 2 B) 3 C) 4 D) 5 E) 6

9.



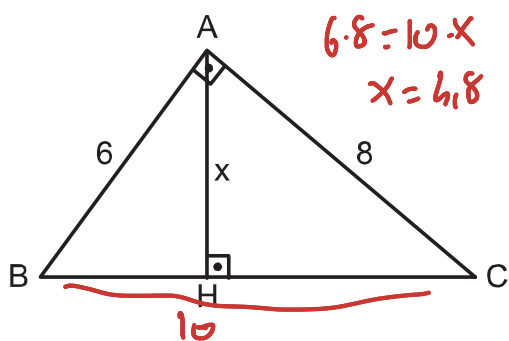
ABC üçgeninde
 $AE \perp BC$
 $BD \perp DC$
 $|BE| = 6 \text{ cm}$
 $|EC| = 2 \text{ cm}$
 $|AD| = \sqrt{3} \text{ cm}$

Yukarıda verilenlere göre, $|AB| = x$ kaç cm dir?

- A) $5\sqrt{2}$ B) $3\sqrt{6}$ C) $2\sqrt{14}$ D) $2\sqrt{15}$ E) $3\sqrt{7}$

$$\sqrt{27+36} = 3\sqrt{7} = x$$

10.



ABC dik üçgen
 $AH \perp BC$
 $|AB| = 6 \text{ cm}$
 $|AC| = 8 \text{ cm}$

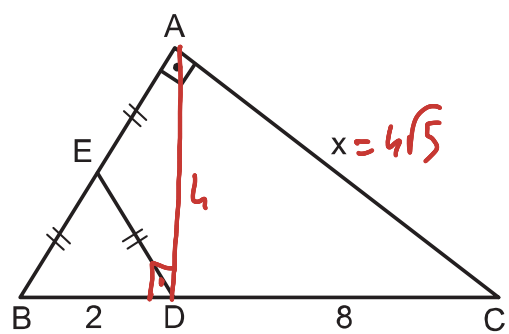
Yukarıda verilenlere göre, $|AH| = x$ kaç cm dir?

- A) 3,2 B) 3,6 C) 4,2 D) 4,8 E) 5,6

$$6 \cdot 8 = 10 \cdot x$$

$$x = 4,8$$

11.



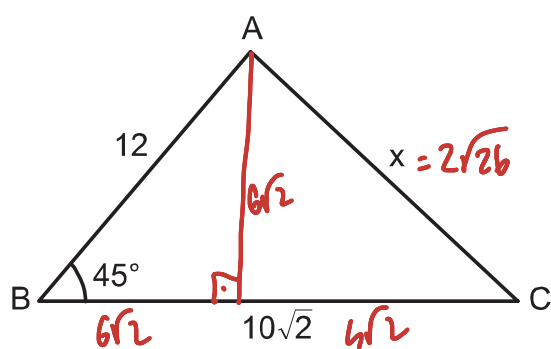
ABC dik üçgeninde
 $|AE| = |EB| = |ED|$
 $|CD| = 8 \text{ cm}$
 $|BD| = 2 \text{ cm}$

Yukarıda verilenlere göre, $|AC| = x$ kaç cm dir?

- A) $4\sqrt{6}$ B) $4\sqrt{5}$ C) $5\sqrt{3}$ D) 8 E) $3\sqrt{7}$

$$x = 4\sqrt{5}$$

12.



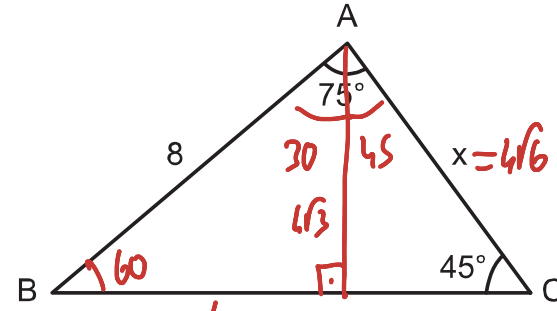
ABC üçgeninde
 $m(\widehat{ABC}) = 45^\circ$
 $|AB| = 12 \text{ cm}$
 $|BC| = 10\sqrt{2} \text{ cm}$

Yukarıda verilenlere göre, $|AC| = x$ kaç cm dir?

- A) $2\sqrt{26}$ B) 10 C) $4\sqrt{6}$ D) $3\sqrt{10}$ E) $2\sqrt{21}$

α

13.

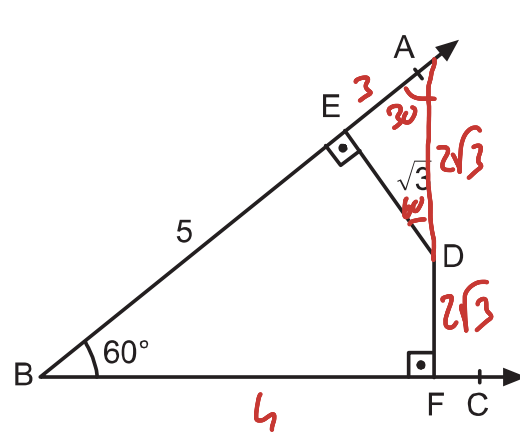


ABC üçgeninde
 $m(\widehat{BAC}) = 75^\circ$
 $m(\widehat{ACB}) = 45^\circ$
 $|AB| = 8 \text{ cm}$

Yukarıda verilenlere göre, $|AC| = x$ kaç cm dir?

- A) $6\sqrt{3}$ B) $4\sqrt{6}$ C) $4\sqrt{5}$ D) $6\sqrt{2}$ E) 8

14.



$m(\widehat{ABC}) = 60^\circ$
 $DE \perp AB$
 $DF \perp BC$
 $|BE| = 5 \text{ cm}$
 $|DE| = \sqrt{3} \text{ cm}$

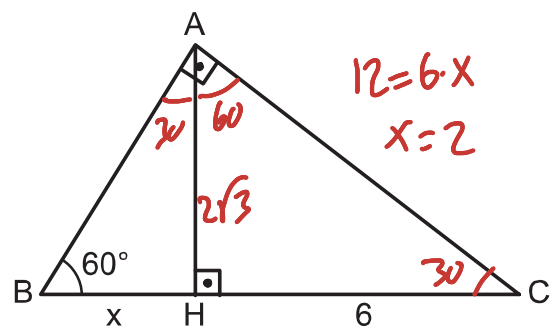
Yukarıda verilenlere göre, $\frac{|DF|}{|BF|}$ oranı kaçtır?

- A) $\frac{\sqrt{3}}{4}$ B) $\frac{\sqrt{3}}{3}$ C) $\frac{\sqrt{3}}{2}$ D) $\frac{1}{2}$ E) $\frac{1}{3}$

$$\frac{2\sqrt{3}}{4}$$

karekök

15.



ABC dik üçgen
 $AB \perp AC$
 $AH \perp BC$
 $m(\widehat{ABC}) = 60^\circ$
 $|HC| = 6 \text{ cm}$

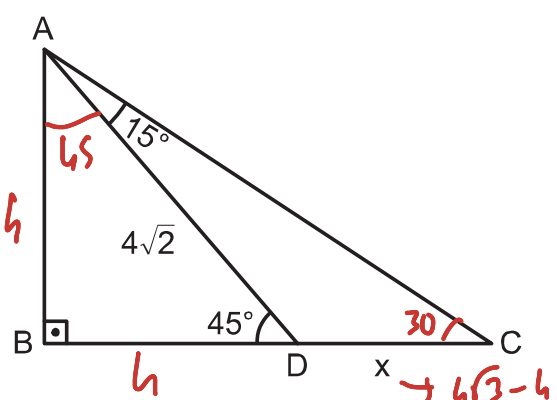
Yukarıda verilenlere göre, $|BH| = x$ kaç cm dir?

- A) $\sqrt{3}$ B) 2 C) 3 D) $2\sqrt{3}$ E) 4

$$12 = 6 \cdot x$$

$$x = 2$$

16.



ABC dik üçgen
 $m(\widehat{ADB}) = 45^\circ$
 $m(\widehat{DAC}) = 15^\circ$
 $|AD| = 4\sqrt{2} \text{ cm}$

Yukarıda verilenlere göre, $|DC| = x$ kaç cm dir?

- A) $\sqrt{3} - 1$ B) $2\sqrt{3}$ C) $2 \cdot (2\sqrt{5} - 1)$

- D) $4 \cdot (\sqrt{3} - 1)$ E) $2 \cdot (\sqrt{3} - 1)$

α