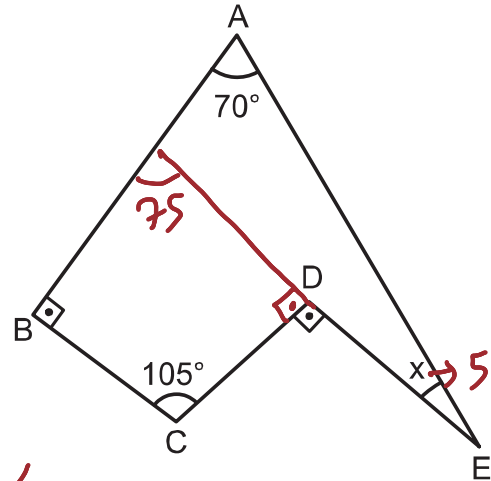


TEST - 5

açılar

1.

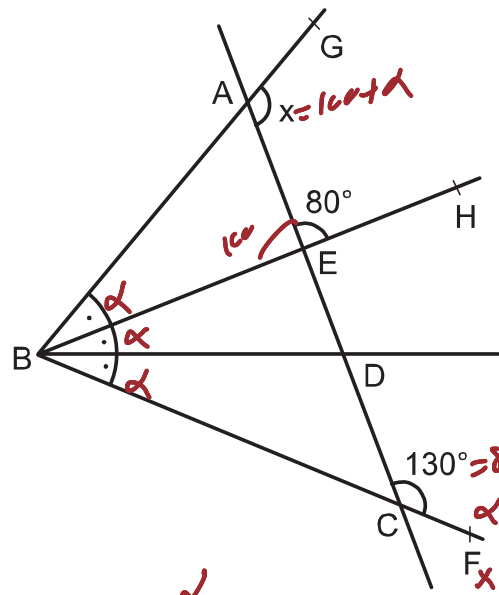


$AB \perp BC$
 $CD \perp DE$
 $m(\widehat{BAE}) = 70^\circ$
 $m(\widehat{BCD}) = 105^\circ$

olduğuna göre,
 $m(\widehat{AED}) = x$ kaç derecedir?

- A) 5 B) 10 C) 15 D) 20 E) 25

2.

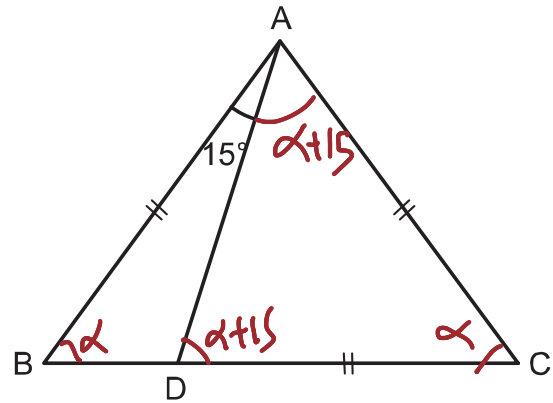


BH ve BD doğruları
 GBF açısını üç eş
 parçaya ayırmıştır.
 $m(\widehat{ACF}) = 130^\circ$
 $m(\widehat{AEH}) = 80^\circ$

olduğuna göre,
 $m(\widehat{GAC}) = x$ kaç derecedir?

- A) 120 B) 125 C) 130 D) 135 E) 140

3.

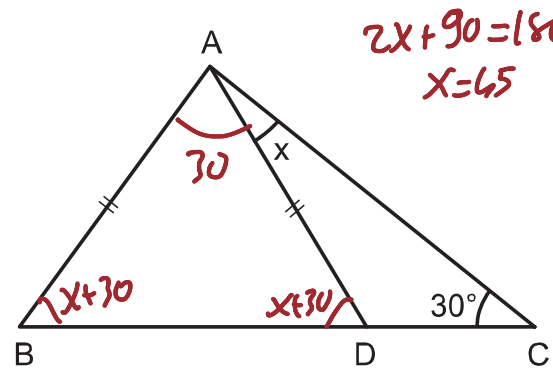


ABC üçgeninde
 $m(\widehat{BAD}) = 15^\circ$
 $|AB| = |AC| = |DC|$
 $3\alpha + 30 = 180$
 $\alpha = 50$
 $\alpha + 30 = 80$

Yukarıda verilenlere göre, $m(\widehat{BAC})$ kaç derecedir?

- A) 60 B) 65 C) 70 D) 75 E) 80

4.

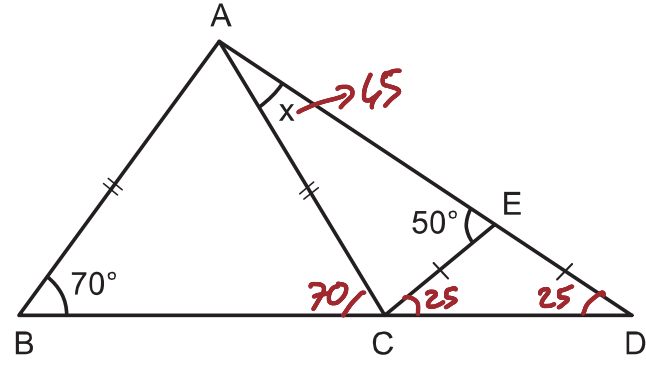


ABC üçgeninde
 $|AC| = |BC|$
 $|AB| = |AD|$
 $m(\widehat{ACB}) = 30^\circ$

Yukarıda verilenlere göre, $m(\widehat{DAC}) = x$ kaç derecedir?

- A) 45 B) 40 C) 35 D) 30 E) 25

5.

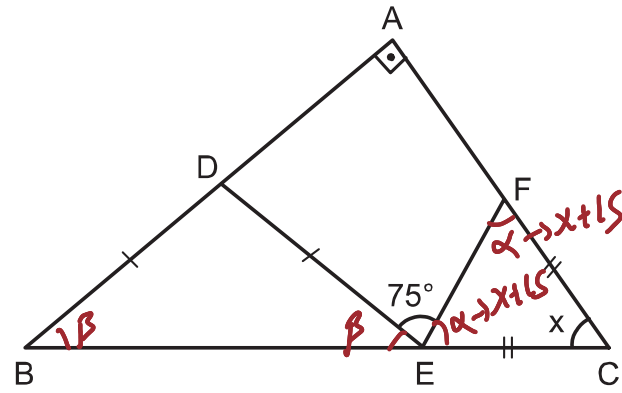


ABD üçgen
 $|AB| = |AC|$
 $|EC| = |ED|$
 $m(\widehat{ABD}) = 70^\circ$
 $m(\widehat{AEC}) = 50^\circ$

Yukarıda verilenlere göre, $m(\widehat{CAD}) = x$ kaç derecedir?

- A) 50 B) 45 C) 40 D) 35 E) 30

6.

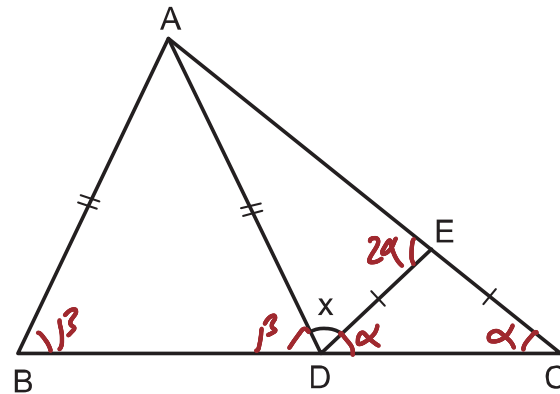


ABC dik üçgen
 $m(\widehat{DEF}) = 75^\circ$
 $|FC| = |EC|$
 $|BD| = |DE|$
 $\beta + x = 90$
 $\alpha + \beta = 105$
 $\alpha - x = 15$
 $3x + 30 = 180 \Rightarrow x = 50$

Yukarıda verilenlere göre, $m(\widehat{ACB}) = x$ kaç derecedir?

- A) 45 B) 50 C) 55 D) 60 E) 65

7.

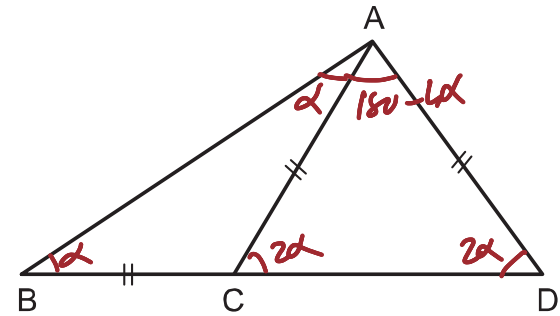


ABC üçgeninde
 $|AB| = |AD|$
 $|ED| = |EC|$
 $m(\widehat{BAC}) = 85^\circ$
 $\alpha + \beta + x = 180$
 $180 - \alpha - \beta = x = 85$

Yukarıda verilenlere göre, $m(\widehat{ADE}) = x$ kaç derecedir?

- A) 75 B) 80 C) 85 D) 90 E) 95

8.

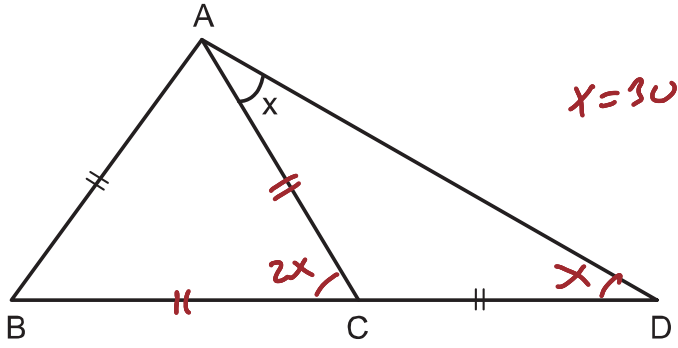


ABD üçgeninde
 $|BC| = |AC| = |AD|$
 $m(\widehat{BAD}) = 120^\circ$
 $180 - 3\alpha = 120$
 $\alpha = 20$
 $2\alpha = 40$

Yukarıda verilenlere göre, $m(\widehat{ADB})$ kaç derecedir?

- A) 20 B) 30 C) 40 D) 50 E) 60

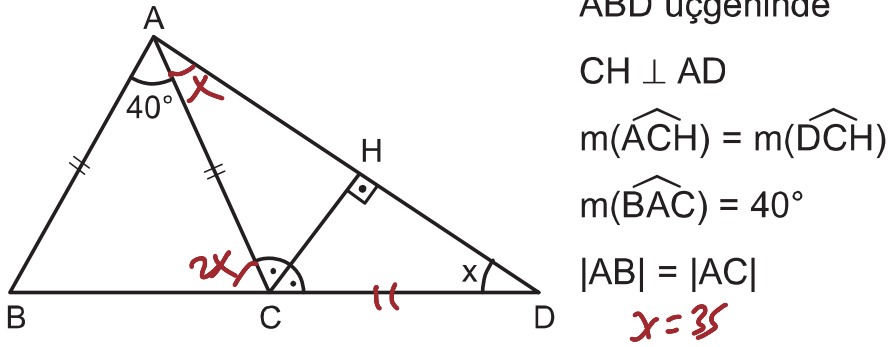
9.



ABC eşkenar üçgen, B, C, D doğrusal, $|AB| = |CD|$ olduğuna göre, $m(\widehat{CAD}) = x$ kaç derecedir?

- A) 15 B) 20 C) 25 D) 30 E) 35

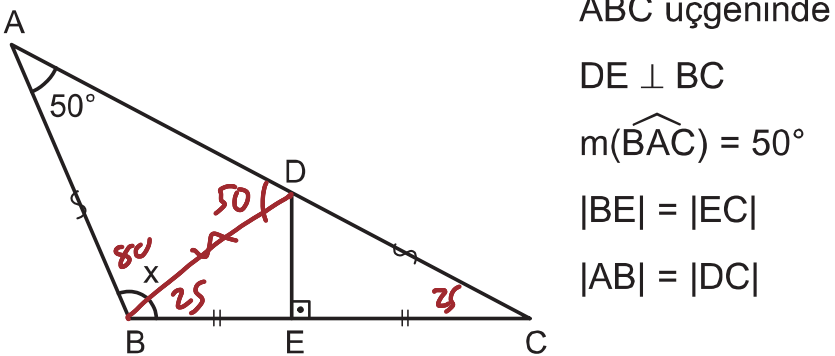
10.



Yukarıda verilenlere göre, $m(\widehat{ADB}) = x$ kaç derecedir?

- A) 25 B) 30 C) 35 D) 40 E) 45

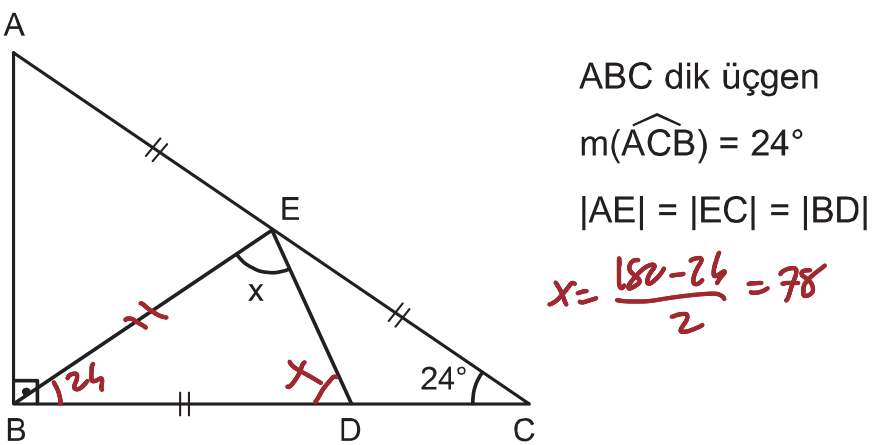
11.



Yukarıda verilenlere göre, $m(\widehat{ABC}) = x$ kaç derecedir?

- A) 120 B) 115 C) 110 D) 105 E) 100

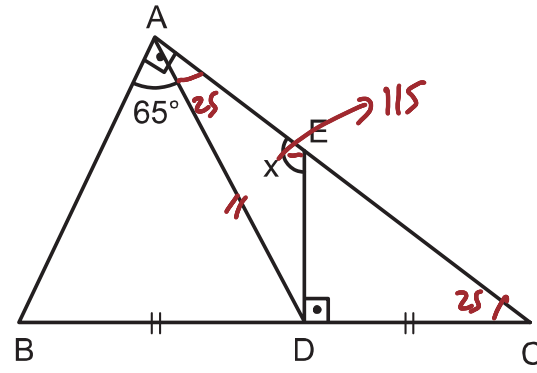
12.



Yukarıda verilenlere göre, $m(\widehat{BED})$ kaç derecedir?

- A) 78 B) 76 C) 72 D) 70 E) 65

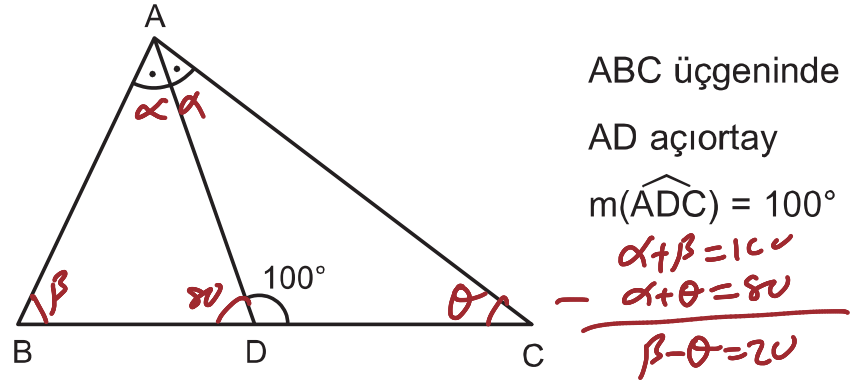
13.



Yukarıda verilenlere göre, $m(\widehat{AED}) = x$ kaç derecedir?

- A) 95 B) 100 C) 105 D) 110 E) 115

14.

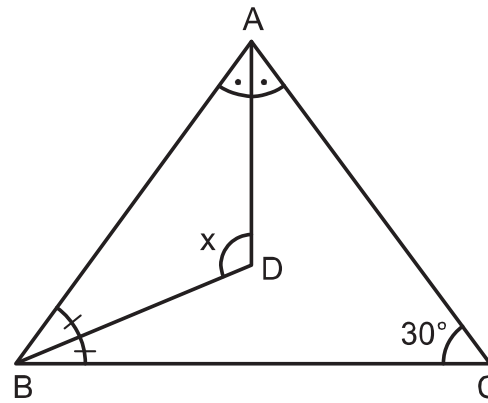


Yukarıda verilenlere göre, $m(\widehat{ABC}) - m(\widehat{ACB})$ kaç derecedir?

- A) 20 B) 30 C) 40 D) 50 E) 60

karekök

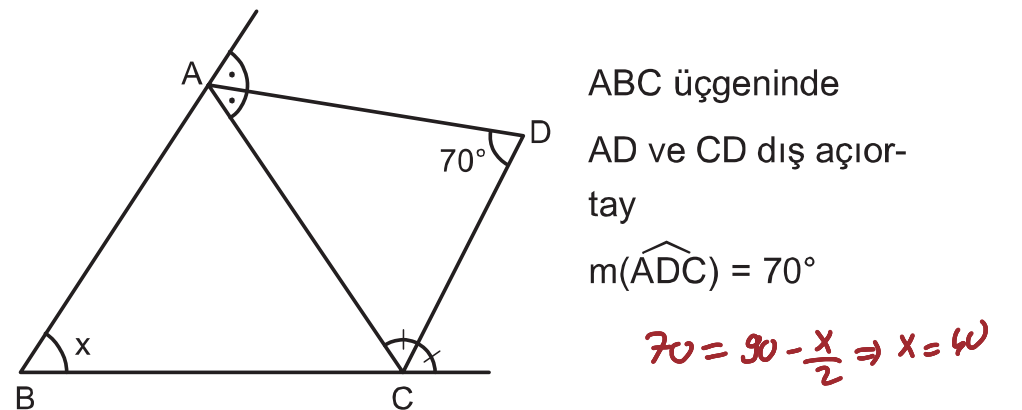
15.



Yukarıda verilenlere göre, $m(\widehat{ADB}) = x$ kaç derecedir?

- A) 95 B) 100 C) 105 D) 110 E) 115

16.



Yukarıda verilenlere göre, $m(\widehat{ABC}) = x$ kaç derecedir?

- A) 40 B) 50 C) 60 D) 70 E) 80